

Company Profile

One Solution Limited

ONE SOLUTION LIMITED

One Solution Limited is a China - Hong Kong based company, which was found in 1996 by a group of IT professionals in business solutions of Computer Equipment, Network Infrastructure and Security in Hong Kong and China. We have sales and technical support offices in Hong Kong and Shenzhen, China. Our sales and technical support team are devoted to provide the highest quality professionals in IT industry with our own R&D team in Hong Kong.

With the openness of the global information technology market expanding on a daily basis, One Solution Limited being an IT professional guarantees that our Network and Security Solutions are suitable for our customers' business needs. We will suggest the most suitable solutions according to specified budget and requirements.

We pride ourselves on the philosophy that our solutions and services are strongly customer-driven. Apart from providing hardware, we dedicated ourselves to deliver professional consultation services to solve our customer computing needs.

We Deliver Professional Network and Security Consultation and Solutions.

Corporate Relocation Planning

CORPORATE RELOCATION PLANNING



- **N**etwork System Migration and Planning
- **A**udio Video System Migration and Setup
- **T**elephone System Migration and Setup
- **I**nternet Connection Service
- **C**omputer Relocation
- **C**abling System

E-mail Hosting Service

HARDWARE

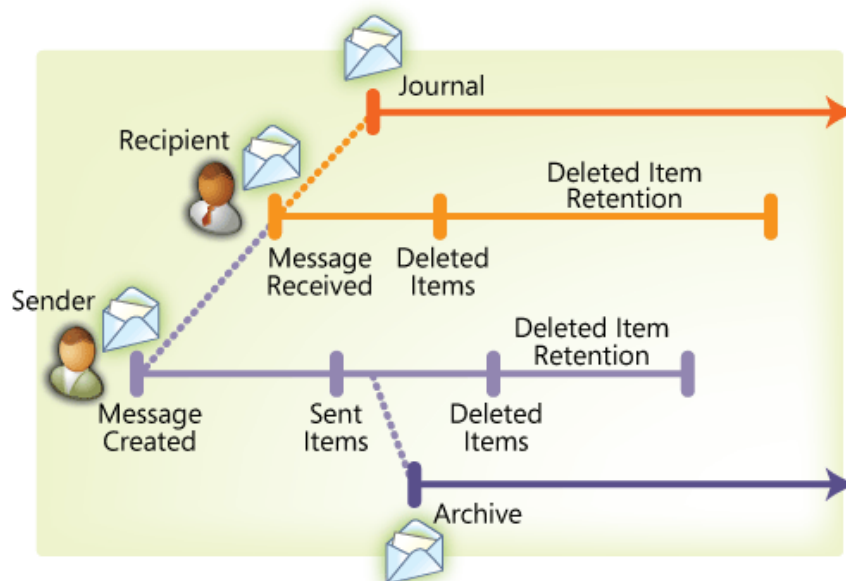
E-MAIL HOSTING SERVICE

E-mail hosting service differ from typical end-user e-mail providers such as webmail sites. They cater mostly to demanding e-mail users and SME businesses which they do not need to own their own e-mail server, while larger enterprises usually run their own e-mail hosting service. E-mail hosting providers allow for premium email services along with custom configurations and large number of accounts. In addition, hosting providers manage user's own domain name, including any e-mail authentication scheme that the domain owner wishes to enforce in order to convey the meaning that using a specific domain name identifies and qualifies email senders.

SERVER HOSTING

Dedicated server, is a type of internet hosting where the client leases an entire server not shared with anyone. As organizations have full control over the servers, including choice of operating system, hardware, etc.

- Dedicate Windows Exchange Server Hosting
- Dedicate Linux Mail Server Hosting



Fax to E-Mail & Print to Fax

HARDWARE

Traditional faxing involves sending a scanned copy of a document (a facsimile) from one fax machine to another, over the phone network. Internet faxing (or "online faxing") is a general term which can refer to one of several methods of achieving this over the Internet - with a goal of both reduced costs and increased functionality over traditional faxing.



FAX TO E-MAIL SERVICE

- Fax to e-mail Server Setup

PRINT TO FAX SERVICE

- Print to Fax Server Setup

Fingerprint Time & Attendance Recorder

HARDWARE

FEATURES

- 10,000 fingerprint template capacities
- 5,000 transaction capacities
- Up to 10,000 fingerprint records
- 1:1 Authentication and 1:N Identification
- Standalone/network communication via RS232/RS485 (max. 32ch) and TCP/IP
- Identification speed: Less than 2 seconds
- Language support: English, Traditional Chinese and Simplified Chinese



*Different model has different features

HARDWARE



Lenovo, HP and DIY computer Set IBM, HP Server Set

- Setup and installation
- Telephone-based software troubleshooting
- One Solution provide support with a single source for hardware and software expertise - available when you need it the most

Linux Office Solution

HARDWARE

Linux Samba is a client/server system that implements network resource sharing for Linux and other UNIX computers. With Samba, UNIX files and printers can be shared with Windows clients and vice versa. Samba supports the Session Message Block (SMB) protocol. Nearly all Windows computers include SMB support with their internal network subsystems (NetBIOS in particular).



LinuxHQ
The Linux Information Headquarters!
www.linuxhq.com



LINUX OFFICE SOLUTION

- Linux SAMBA File Server Setup and Installation
- Linux Freeware Workstation Operation System, and Work Processing Utility
- Setup and Installation

Network Backup Solution

HARDWARE

We cover solutions for LAN (Local Area Network) based users - including multi-site solutions (you may have multiple premises in your business which will allow you to backup data from computers on one of your sites to another site and so allow for Disaster Recovery - some businesses backup data to a directors home). We may suggest combinations of the following technologies among others.

- Off-Site Backup Service
- Net Backup
- OneBACKUP-Remote Data Backup Solution

DATA BACKUP

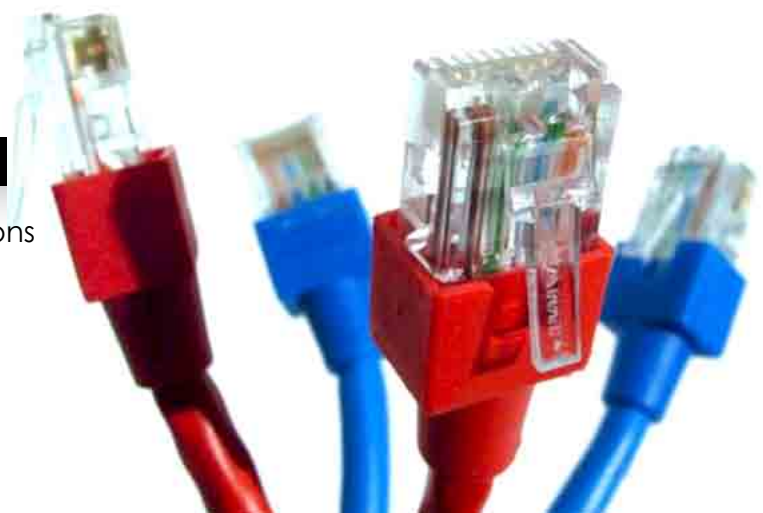
- Virtual Private Networks Backup Solution - for secure multisite backup
- Internet backup solutions for low cost small scale backup
- Network Attached Storage (NAS) solutions
- Backup Device Setup and Installation including NAS, Tape, External HD, DVD RW

BACKUP SERVICES

- Backup Planning
- Backup and Restore Services

SYSTEM BACKUP

- Storage Area Networks (SAN) solutions
- Disk Mirroring (RAID)

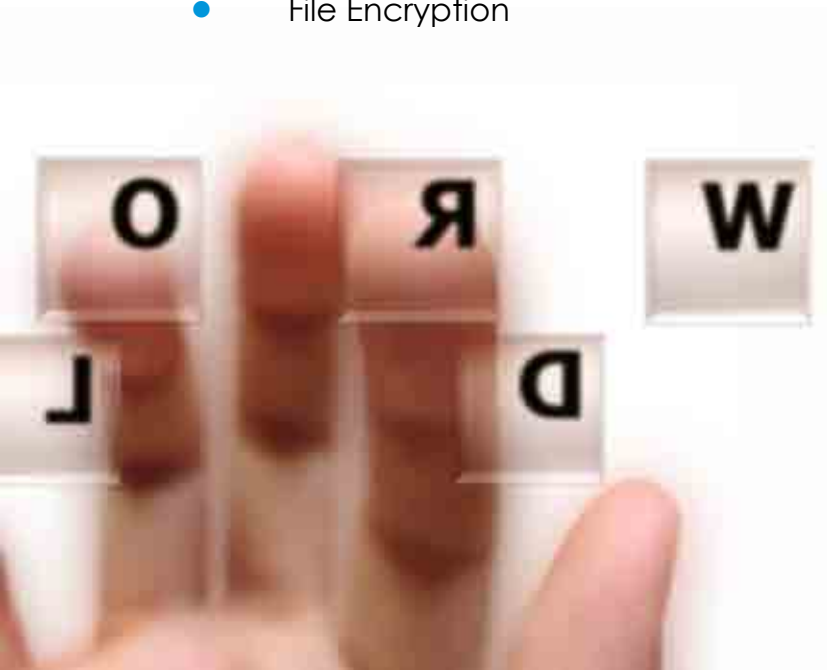


Network Security

HARDWARE

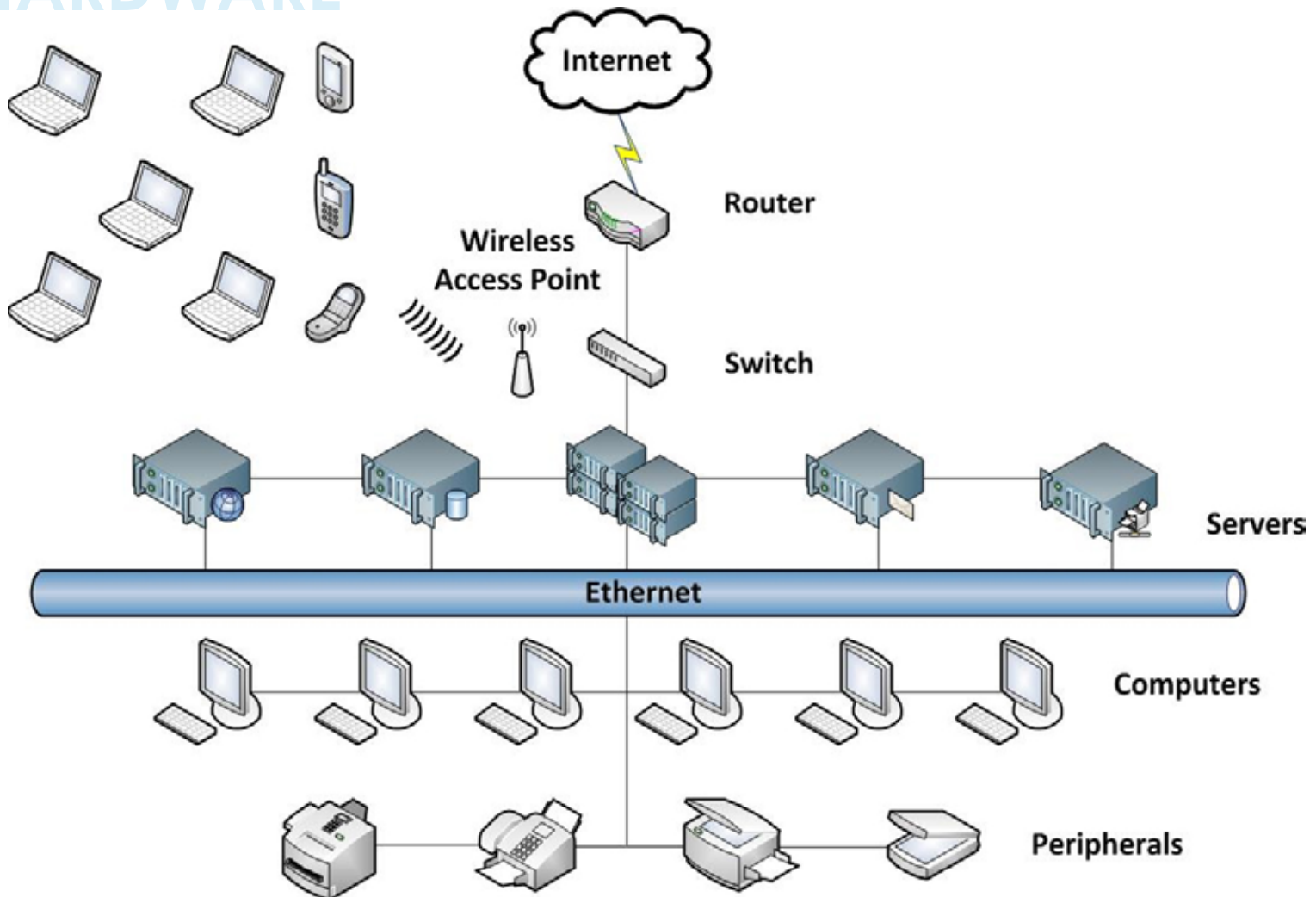
A company's information system is at the core of every business. A network security attack, or even worse a breach, can be devastating to a company. In addition to lost business and productivity as a result of an attack, the time and labour involved in re-deploying infected servers, desktops and laptops poses a significant expense. A security breach can harm a company's reputation and result in non-compliance with client privacy protection laws. One solution Ltd. can provide an excellent solution to solve the above problems.

- Firewall Setup and Installation
- Network Access Control
- File Server Access Right Control
- Internet Access Control
- E-mail Access Control
- User Copy File and Print File Control by Curtain e-Locker
- Anti-Virus Software Installation
- Anti-SPAM Software Installation
- File Encryption



Network System Installation

HARDWARE



NETWORK SYSTEM INSTALLATION

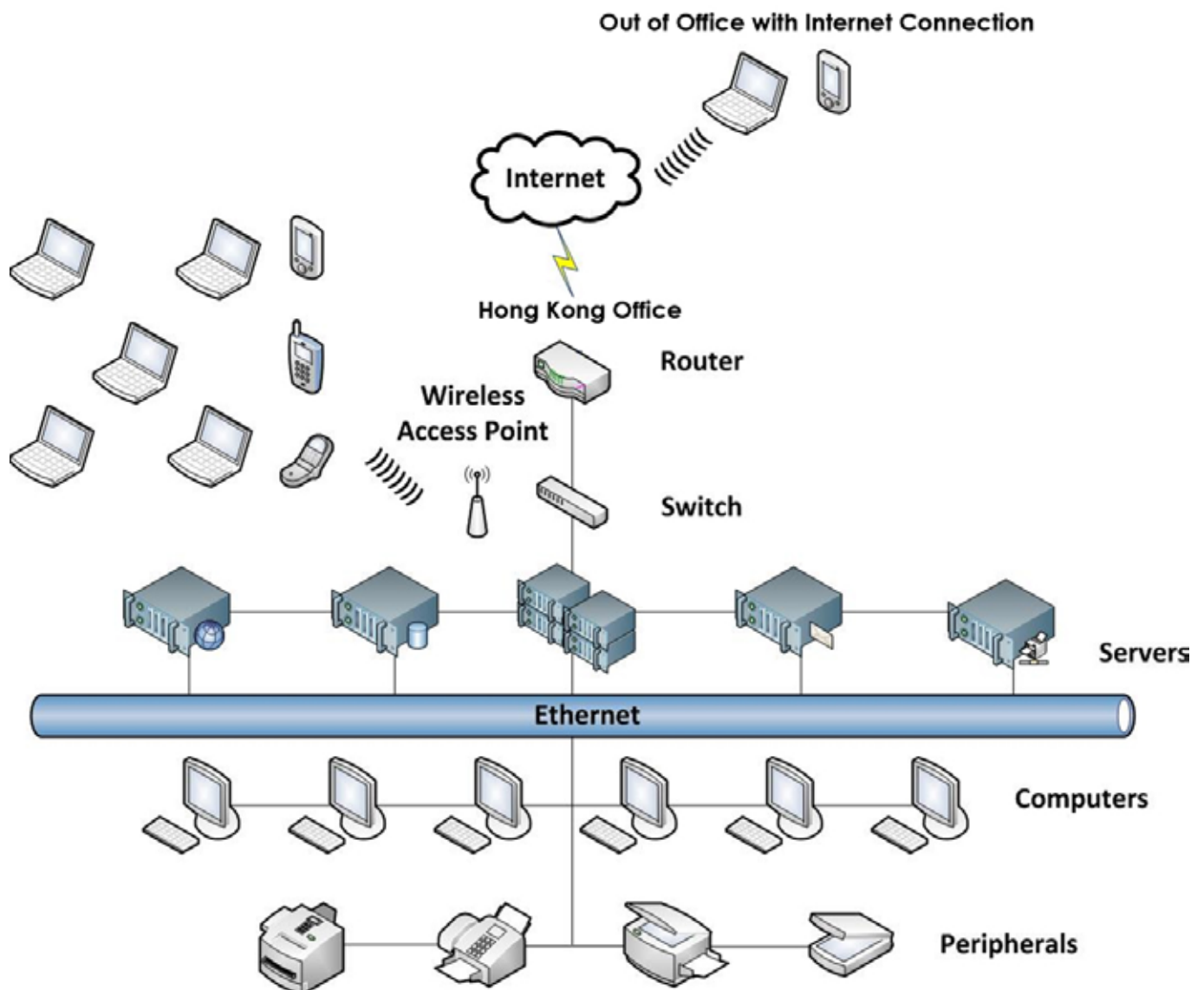
- Network Cabling
- Server Rack Installation
- Server Room Design and Setup
- Network Switch Setup and Installation

Remote Office Solution

HARDWARE

System administrator to monitor and manage servers and other network equipment by remote control regardless of whether the machine is powered on. To remotely manage network servers and routers, IT administrators need network access when problems occur.

- Remote Data Access by VPN or SSL-VPN
- Microsoft Exchange Mail Setup and Hosting
- Microsoft Windows Web Work Place, Remote Desktop Connection



Surveillance System

HARDWARE

SURVEILLANCE SYSTEM

Surveillance System is a new technology for fix location remote monitoring and image recordings.

IP SURVEILLANCE SYSTEM

The need for IP Surveillance system has been expanding rapidly and widely adopted throughout public and commercial sectors such as government, retail shops, manufacturing and multiple offices with different sites. Unlike traditional CCTV, IP Surveillance system provides a centralized management and watermark recording function by simply connecting an IP camera to a network and allows users to log-in and access and monitor via web browser or 3G anywhere anytime.

CCTV SURVEILLANCE SYSTEM

- IP Surveillance Services
- Play back captured video by searching keyword or bill number and monitor daily cash flow
- Check everyday traffic with different kinds of analytical reports
- Event trigger alert



Video Conferencing / Web Conferencing

HARDWARE

VIDEO CONFERENCING

A video conference is a set of interactive telecommunication technologies which allow two or more locations to interact via two-way video and audio transmissions simultaneously.

- For Saving Time, Travelling Cost
- Long Distance Meeting at all time
- Immediate response to customers

Connectivity

- Point-to-point and Multipoint

Continuous Presence

- Broadcast Mode – Main speaker displayed on screen to all
- Continuous Presence – view multiple participants

WEB CONFERENCING

Integrated conferencing solution of voice, data and video content, giving the ultimate multimedia conferencing experience.

Meeting Center Gives the Host Control:

- Monitor conference attendees
- Limitless participant capacity

Conferencing = Increased Productivity:

- Quicker decision making
- Increase company interaction

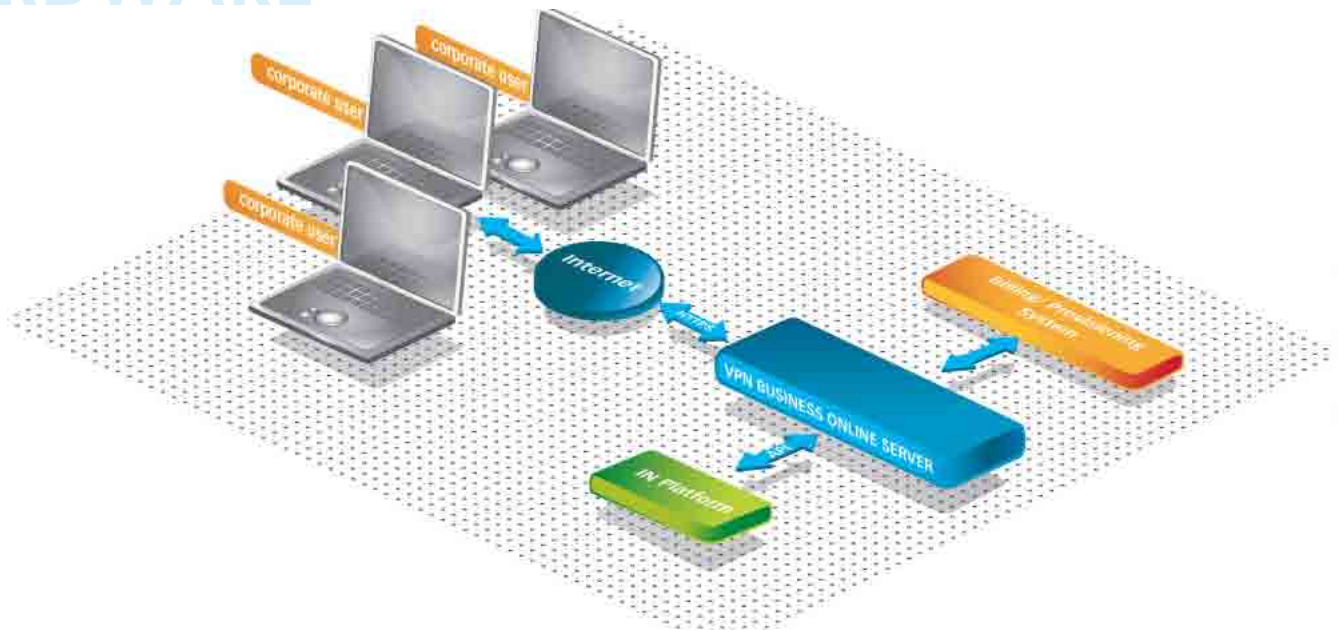


Necessity, Luxury,
or Both. Deluxe Boardroom



Virtual Private Network

HARDWARE



Nowadays, the Virtual Private Network (VPN) has risen fast to become a major networking technology. With a VPN, user can send data, via a shared or public network in a manner that emulates a point-to-point private link, between two networks (routers), between two server, or between a client and a server. The remote PC (installed with a VPN client software) utilizes the existing telecommunications infrastructure (e.g. phone lines, broadband services, dedicated Internet link, etc.), and a tunneling protocol (incorporated with other authentication and encryption protocols) to securely access resources inside the corporate Intranet through a VPN server.

VIRTUAL PRIVATE NETWORK (VPN)

- Network Connection between Main Office and Branch Office
- Data Sharing between Hong Kong and China Offices
- Mobile and Remote User Data Access

Voice over IP

HARDWARE

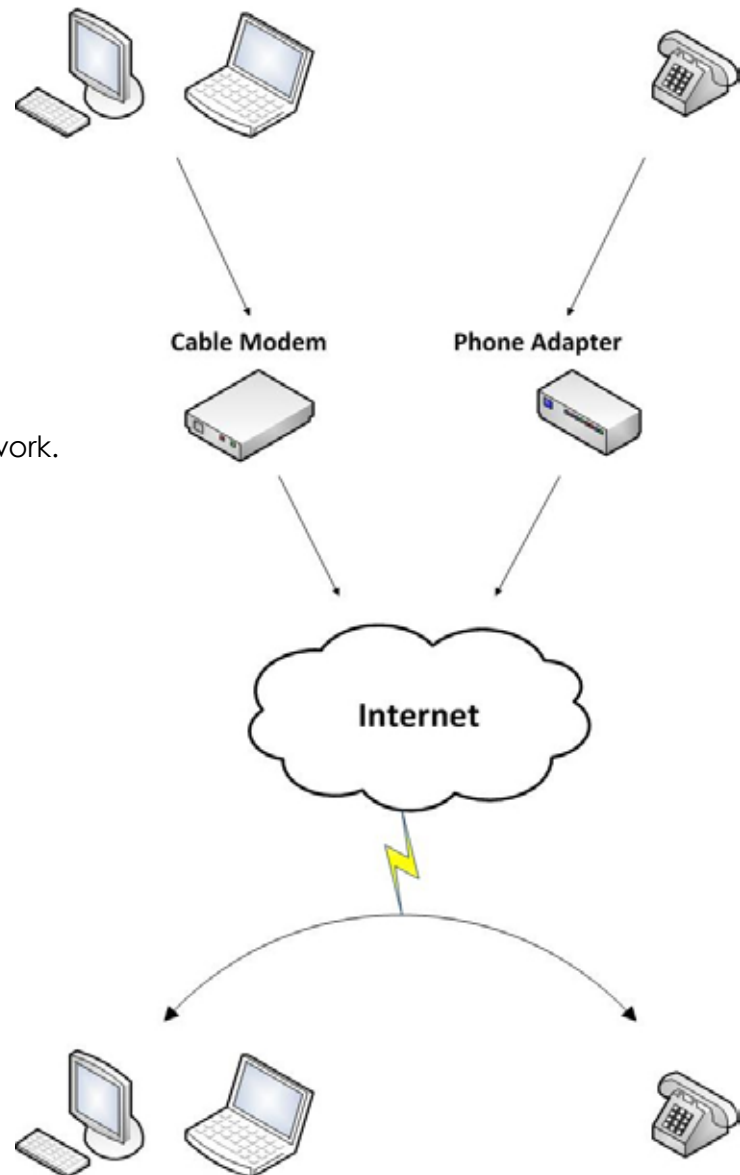
Voice over IP (VoIP) allows enterprises to make telephone calls over IP-based data networks with superior costs versus benefits. On top of reducing costs on long distance calls and infrastructure, its integrated voice/data network caters for more standardization and simplification.

VOIP SERVICE

- Voice Connection between Hong Kong and China by Internet.
- Voice Connection between Remote users to fixed location by Internet.

COST EFFECTIVE

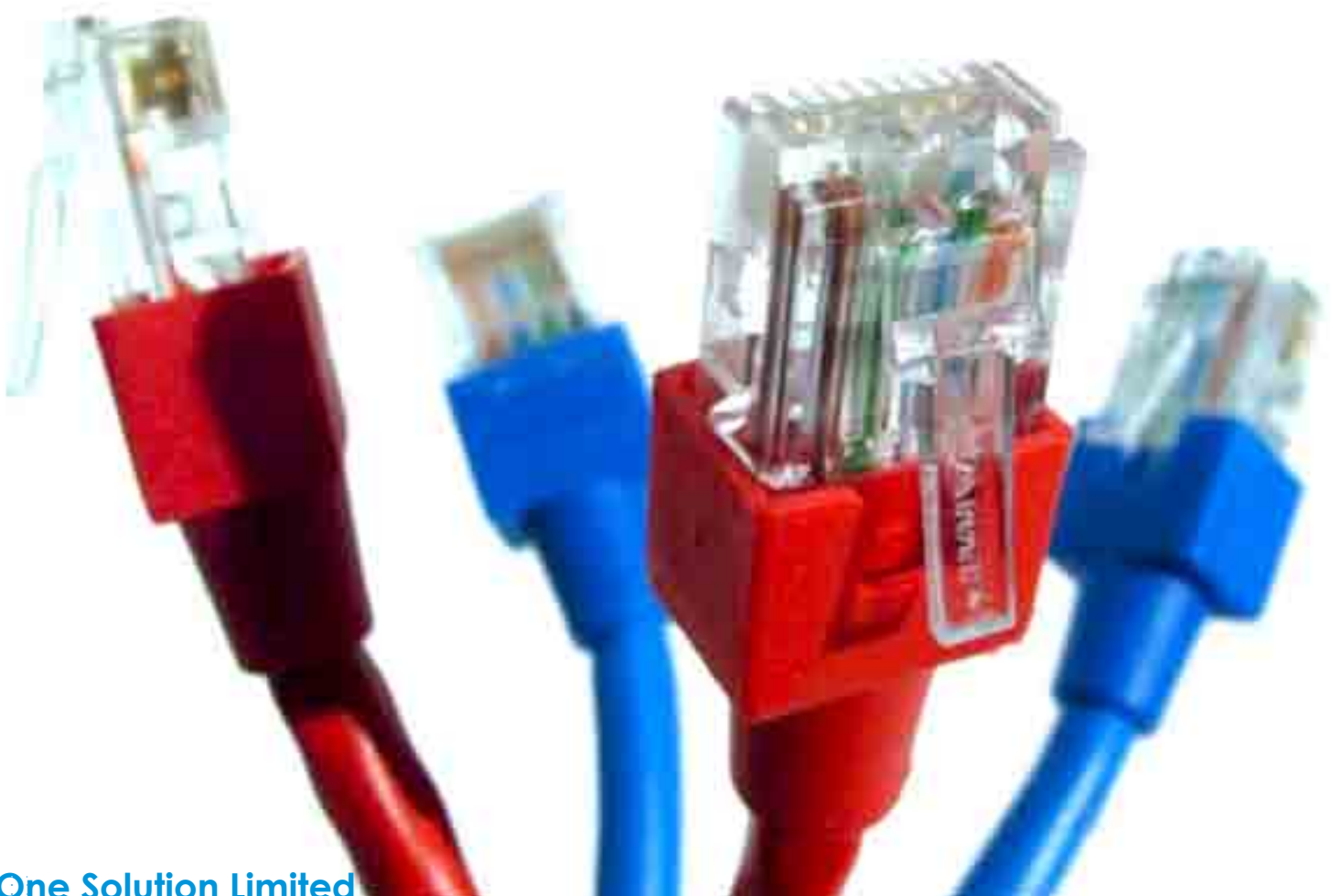
- VoIP capability allows you to place voice calls over the Internet data network.



Internet Connection Service

INTERNET CONNECTION SERVICES

- Asymmetric Broadband Connection
- Symmetric Broadband Connection (Typically for business used)
- Lease line
- IPLC
- China Direct Internet Access (CDIA)
- Service Dedicated Internet Access (DIA)
- Multi-Internet Links Balancing Solution



IT OUTSOURCING

WHY IT OUTSOURCING?



- Streamline your environment and to increase your flexibility and responsiveness by making sure IT functions and business processes are carefully aligned to support business strategies.
- Infrastructure, applications, and business processes that accelerate business growth, lower costs, and mitigate risks.

Microsoft Exchange Server

MICROSOFT EXCHANGE SERVER

TOP TEN REASONS TO UPGRADE

1. Keep your e-mail system running at lower cost
2. Access e-mail, voice mail, calendar, and contacts from virtually anywhere, anytime
3. Get affordable, enterprise-class mobile messaging that's better than ever
4. Empower employees with unified messaging while saving money
5. Get comprehensive protection from spam, viruses and phishing attacks
6. Reduce compliance risk in a way that makes sense for your business
7. Take advantage of powerful Web access
8. Boost administrator productivity with new tools
9. Ease deployment and management
10. Optimize your investment for future growth

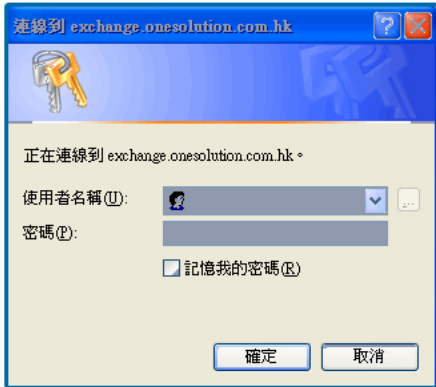
Features of Microsoft Exchange Server

MICROSOFT EXCHANGE SERVER

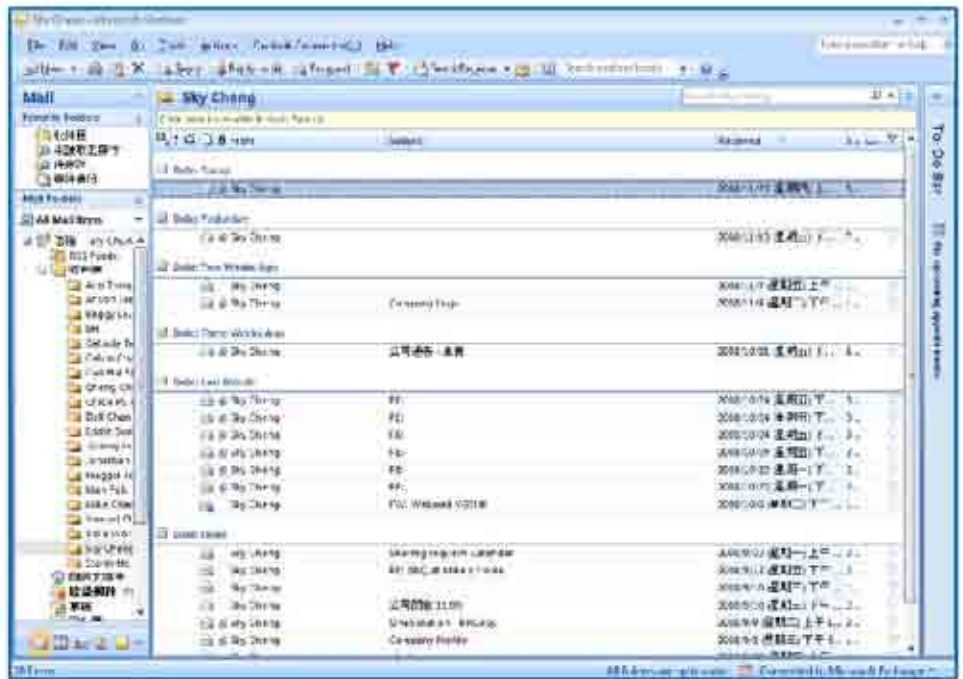
- **Anti-spam and Antivirus**
Anti-spam: Connection Filtering
Anti-spam: Sender and Recipient Filtering
Anti-spam: Safe Sender List Aggregation
Anti-spam: Sender ID
Anti-spam: Content Filtering
Anti-spam: Anti-spam Stamp
- **Confidential Messaging**
SSL Certificates Automatically Installed
- **Web-based Messaging (Fig. 1)**
Remote Document Access: WebReady document Viewing
- **Compliance (Fig. 2)**
Messaging Records management
Flexible Journaling
Multi-Mailbox search
Archive Integration
- **Anywhere Access (Fig. 3)**
Schedulable Out of Office
- **Unified Messaging**
Voice Messaging System
Fax Messaging System
- **Mobile Messaging**
Direct Push - ActiveSync maintain a secure connection with Exchange Server 2007, receiving new or updated e-mail, calendar, contacts and tasks as soon as they arrive on the server.
- **Multi Access Location**
By using the same e-mail server; as you read the e-mail in Hong Kong office, you do not have to read it over again in US office because it will mark as 'READ'. All the data will synchronize to both location automatically. As a result in reduced operating costs and time savings.
- **Synchronization**
Fully access your Microsoft Exchange Server mail box system by using; **Smart Phone, PDA Phone** and **Mobile Phone**.

Features of Microsoft Exchange Server

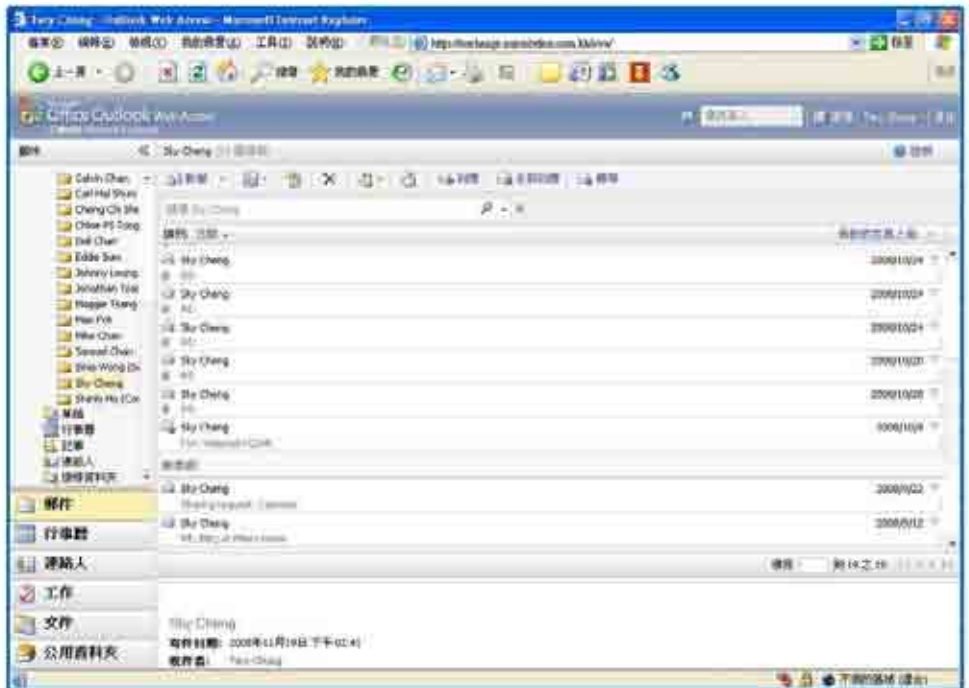
MICROSOFT EXCHANGE SERVER



(Fig. 1)



(Fig. 2)



(Fig. 3)

Network Maintenance Service

NETWORK MAINTENANCE SERVICE

Today, you rely on your computer to communicate, analyze, manage, strategize and perform billable services. So what happens when your computer or network goes down?

Computers are so advanced that they don't have the same problem as other machines. The computer network is a collection of complex machines and software, communicating simultaneously perform trillions of calculations, using hundreds of parts and wires, and under constant assault by viruses and spyware and their own users. Because of these and other factors (mostly human), your computers require regular computer service maintenance to keep the big problems away and maintain optimal performance.

- Monthly Computer Hardware Health Check
- Server Maintenance
- Server Monitoring
- Workstation Maintenance
- Microsoft Windows Security Update
- Daily Data Backup
- Network Planning
- Network Assessment
- Windows Server Maintenance
- Linux Server Maintenance
- Network Peripheral Maintenance
- Windows Server Administration
- Linux Server Administration
- Mail Server Administration

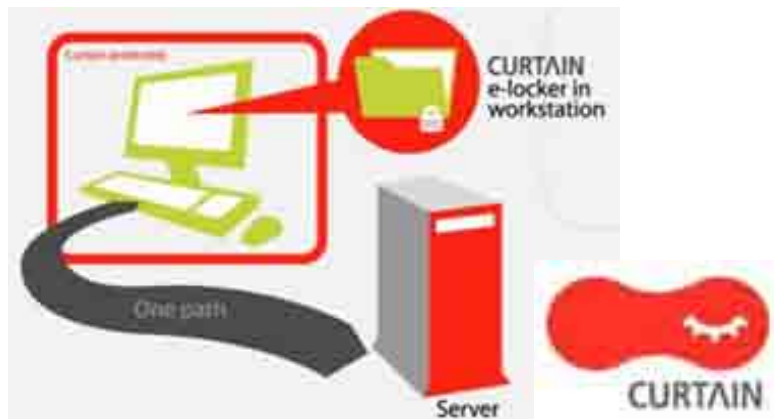


Curtain Data Security System

SOFTWARE

Curtain is a data security system that prevents your confidential files from leading out of the company. Curtain allows users to access confidential files by using corresponding software, such as MS Word, MS Excel, AutoACD and Solidworks, but not to print, save as, or send files to external sources, such as floppy disk, USB disk, CDR, web mail.

- Curtain e-Locker
- Curtain DocNet



CURTAIN MODULES

Curtain e-locker covers MS Office and the most popular CAD software, such as AutoCAD, SolidWorks, Unigraphics, etc. All the existing modules are listed below.

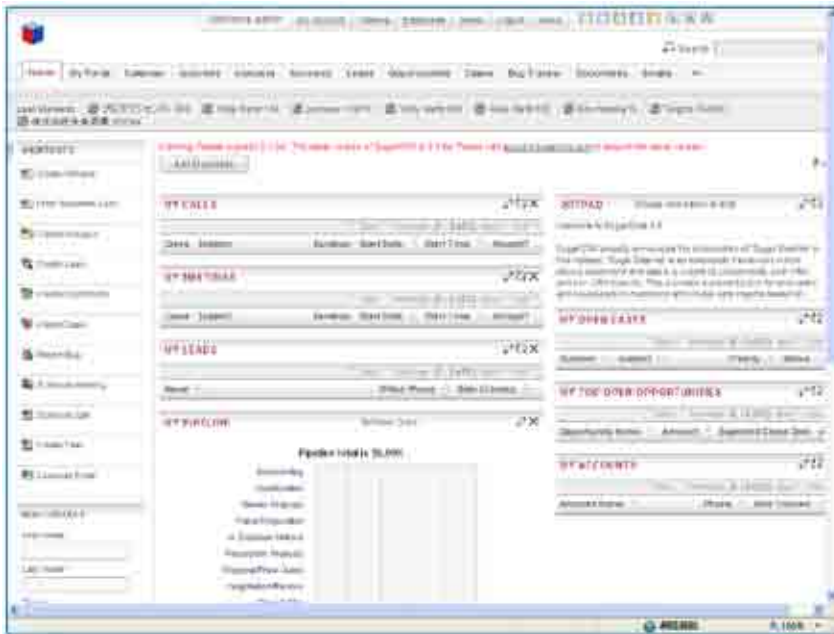
- **Office Utilities:**
 - Adobe Acrobat
 - Adobe Reader
 - Microsoft Excel
 - Microsoft Notepad
 - Microsoft Paint
 - Microsoft PowerPoint
 - Windows Picture and Fax Viewer
- **Graphics & Multimedia:**
 - Adobe Illustrator
 - Adobe Photoshop
 - CorelDraw
 - Windows Media Player
- **CAD / CAM Software:**
 - AutoCAD
 - Autodesk DWF Viewer
 - eDrawings
 - JewelCAD
 - MasterCAM
 - Pro/ENGINEER
 - SolidWorks
 - SolidWorks Viewer
 - Unigraphics
 - Volo Viewer
- **Others:**
 - Cognos Impromptu
 - Jewelry Database
 - Macro Express

Customer Relation Management

SOFTWARE

Customer Relation Management (CRM) methodologies are focused on building individual customer relationships for the purpose of creating and maintain a loyal customer base. CRM software works across all corporate departments to help harmonize customer-centric thinking in the entire organization. You can manage your contacts and customer activities, enforce your business strategy with technology to consistently meet customer needs, share a single 360- degree view of your customers with your company, and personalize new and ongoing customer interactions to cost-effectively acquire and retain good customers.

The goal of CRM is to collect that information in a central repository, analyze it, and make it available to all departments. For example, a hotline call center may have a screen pop; a small application that is connected to the phone system. This application, which is a type of CRM, automatically senses who is calling, and by the time the agent answers the phone, produces a screen on the computer that lists important information about the caller, such as what they have purchased in the past, what they are likely to buy in the future, and what products the company may have available that would go well with what the customer has already bought.

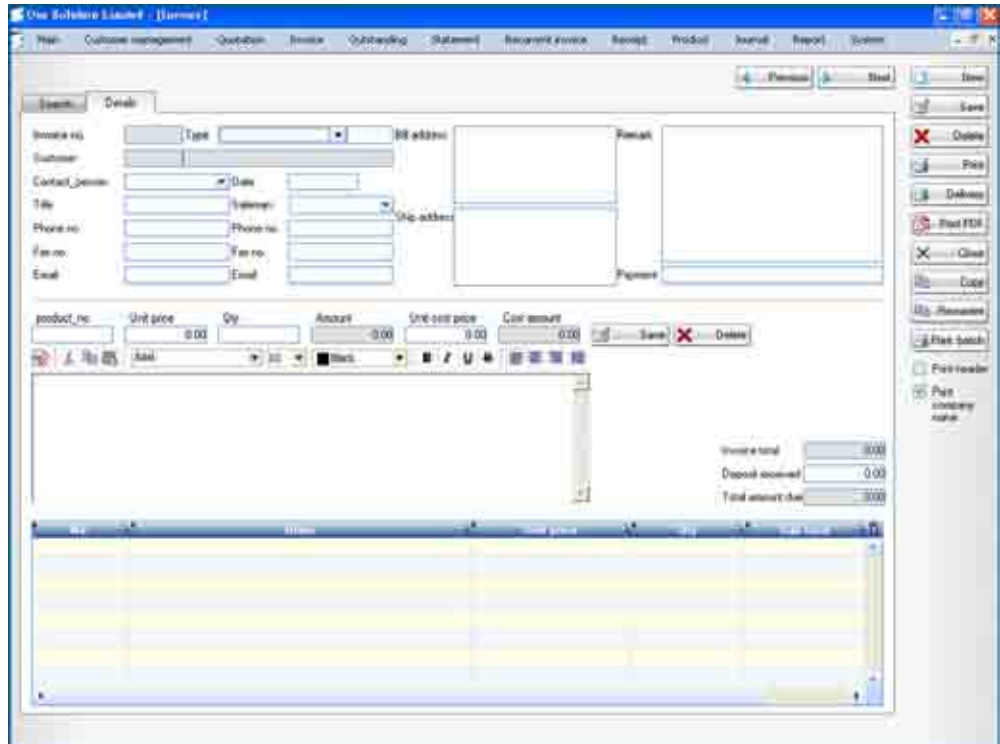


BENEFITS OF CRM:

- Keep track of critical decision markers within the program office and keep a record of your dealings with each one.
- Assist you understand the collective history your company has had with agency contacts.
- To avoid duplication on the business development side and leverage social and business relationships across your company.

Enterprises Resources Planning

SOFTWARE



ERP CUSTOMIZE PROGRAMMING MODULES:

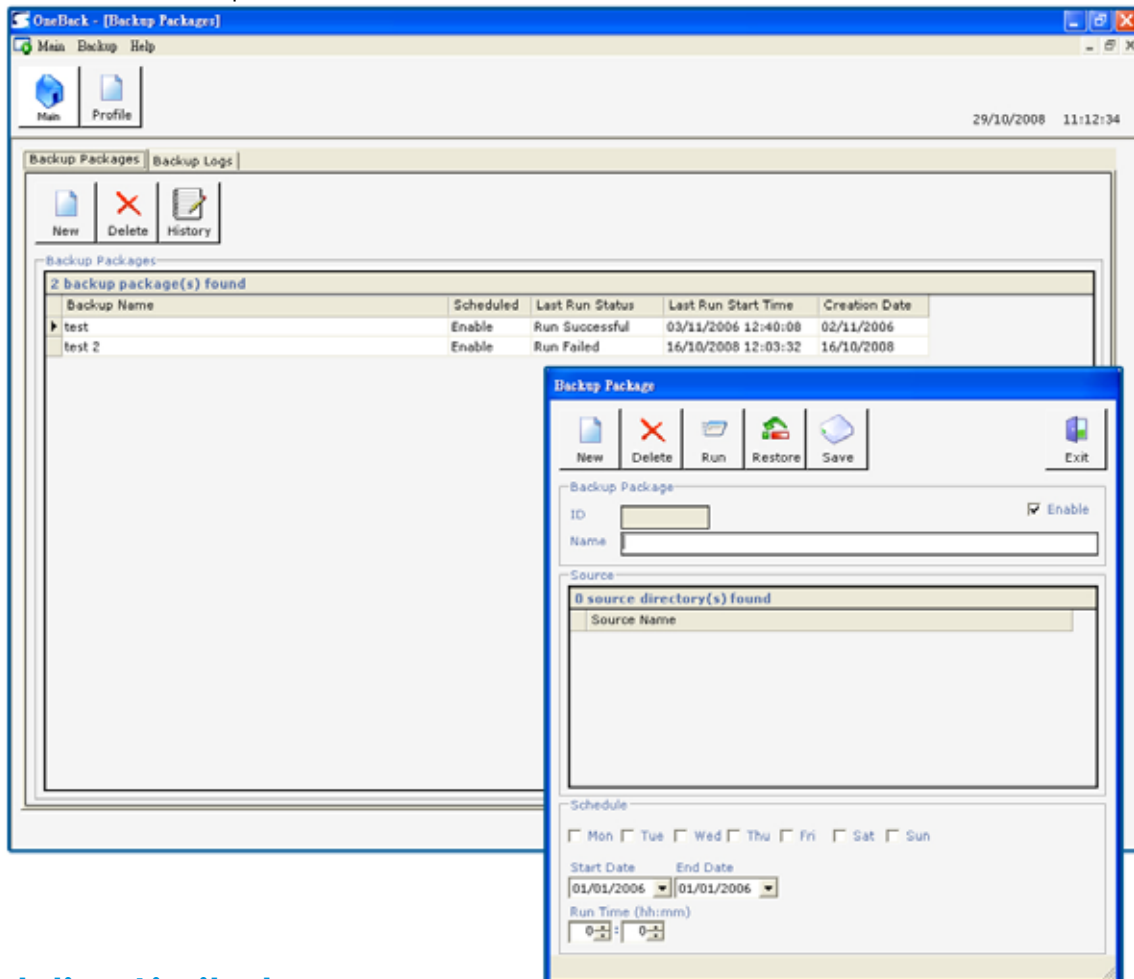
- Customer Database (Editable)
- Accounts Quotation (Provide Specified goods and/or services to a potential customer at a specified price)
- Accounts Outstanding (Unable to pay before Due Date, it will mark it as 'Outstanding')
- Accounts Statement
- Accounts Recurrent Invoice (Generate invoices in a standing order format. All the amount (received or paid) will be generated directly according to the contract)
- Accounts Receipt
- Accounts Report - View on screen print to printer and export to Excel / text format
- Accounts Receivable
- Accounts Payable
- Inventory Control (Multiple location per item/Multiple lots per location, stock take counting, calculated on usage and / or current inventory value)
- Transaction Analysis and Optional Field Creator
- Order Entry
- Purchase Orders
- System Control Manager - Control the access level over difference modules
- Invoice
- Bill of Materials - Raw Materials, sub-assemblies, components, parts and quantities of each needed to manufacture a final product)
- Revenue
- Cost
- Profit
- Product

OneBACKUP Remote Data Backup Solution

SOFTWARE

OneBACKUP leave you vulnerable to data losses and trouble recovering data quickly in the event of a data corruption, virus or other disaster.

- Data backup solutions & support for all versions of Windows (95, 98, ME, NT, 2000, 2003 XP and Vista)
- Scheduled automatic online data backup - no more swapping tapes
- No need to worry about loss of critical data due to fire or any other incident
- Network Backup
- No software installation
- User Friendly
- Scheduling off-site backup
- Direct fast speed transfer rate internet access



WHY PURCHASE TEMPLATES AT ONECMS?

One Template website templates, flash templates and other products are ready-made web designs, that can be used as a basis for fast and high-quality website.

- More Affordable than Custom Web Designs
- User Friendly for Non-Technical User
- Ready for Immediate Download
- Product Promotion
- Easy to Customize
- Time Saving

Features Included:

- Updatable through web browser
- Upload files, browse folders in detail and icon/thumbnail view
- Password protected content, grant access to users and groups
- Multi-language content support
- Define different user group to maintain the different area of the website
- Built-in Gallery function which display images thumbnails in the folder
- Built-in News Update function

Modules Included :

- User Selected Template
- Contact Us Module
- Product Module
- Gallery Module
- News Module
- Home Page

OneCMS:

- \$350/Month (One Year Contract)

Free Services for OneCMS:

- Web Hosting - 1 GB
- E-Mail Hosting - 10 Users (100MB Each)

SOFTWARE

Content Management System (CMS) is a web application designed to make it easy for non-technical users to add, edit and, manage a website.

CMS improves the lifecycle of your website for years to come. The "look and feel" of your site can be changed or relaunched, leaving existing content and page architecture untouched. No need to worry about copying and pasting content into another site, simply publish your new design and the CMS will pull the content into the new look.

Easy content production, no programming skills required, separation of content, structure and design

You can manage the web content from the web browser. Using a graphical user interface, authors can simply create text, insert images and multimedia files, schedule content (and much more) to build and maintain a dynamic web site.

DAILY UPDATES

You do not need to involve web designers or programmers for every little modification, you are in control of your website.

CONTENT SCHEDULING

Content publication can often be time-controlled; hidden for previews; or require a user login with password.



Property Management System

SOFTWARE

Property management system (PMS) is a computerized system used to manage guest bookings, online reservations, point of sale, telephone and other amenities. Hotel property management systems may interface with central reservation systems and revenue or yield management systems, front office, back office and point of sale systems. There are many different types of property management systems available, but a user/business will want to work with the different companies to determine which property management system best fits their needs.

Property management systems may be used in real estate, logistics, intellectual property, or hospitality accommodation management.



The screenshot shows the 'GUESTS' management interface. On the left, there is a sidebar with a 'Logout' button and a list of menu items: Admin, Guests, Reservations, Bookings, Agents, Rooms, Guest Bill, Rates, Lookups, and Reports. The central area is titled 'GUESTS' and contains a form with the following fields: Guest Id., Guest (Last, First, Middle), No., Country (a dropdown menu), Telephone (Area Code-Phone No.), Mobile, E-mail, Fax, P. o. Box, Town, and Postal code. At the bottom of this form are two buttons: 'Guests Check-in' and 'Guest Reservation'. On the right side, there is a search section with 'Add Guest' and 'Guests List' buttons, a 'Search By:' dropdown menu with radio buttons for 'Guest Name' and 'ID, No., P.P. No.', and a 'Find' button. The footer of the interface includes the One Solution logo and the text '© 2008-2013 One Solution Limited'.

Q

S